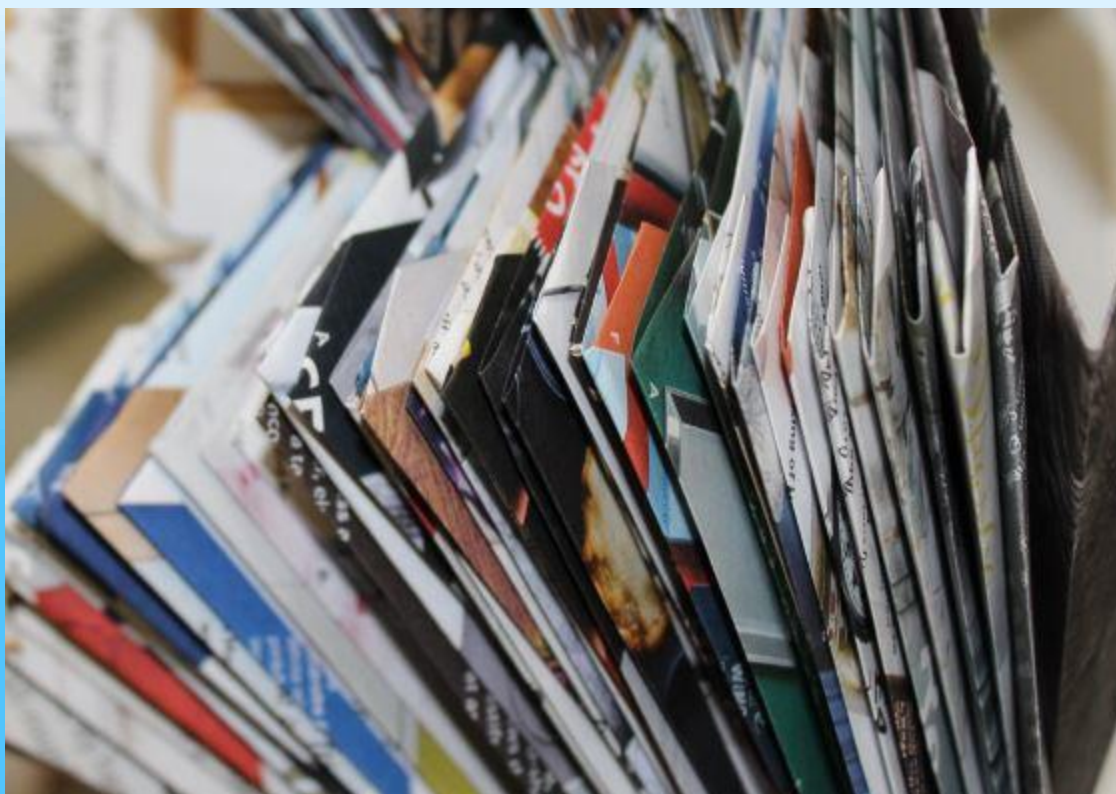




# Leicester Children's Hospital School

---



**Magpie Learning Centre**  
**Early Intervention Offer – Key Stage 3**

---

**2022-23**

# Welcome

For over 70 years, The Children's Hospital School has provided education to young people who are too ill to attend their mainstream school. We teach across four school sites and provide home tuition for those too ill to leave their home. In 2017 the school was judged outstanding in all areas by OFSTED and there is a culture that permeates throughout that means we are always striving to improve outcomes for children. We have a reputation both locally and nationally of being an outstanding, forward thinking and innovative school.



We support a range of medical needs, both physical and mental, experienced by students within the school. Some may have chronic and / or life-threatening medical conditions that bring them into hospital many times over their childhood and adolescence. There will be some with degenerative medical conditions, acquired brain injuries, or those recovering from major surgery. A significant number of pupils have social, emotional, and complex mental health needs.

## The Magpie Learning Centre

The Magpie Learning Centre provides education for pupils aged 10-14 who are finding it difficult to access education in their own school due to mental and / or physical health. Full time pupils follow a personalised timetable comprising both academic and therapeutic elements. Those attending one of our part-time intervention groups will have a timetable designed to meet their specific needs.

## Early Intervention Support

For some children, attendance at school may be impacted by health issues including anxiety and mental health problems. If concerns are not addressed at an early stage, they can affect progress, outcomes and the transition process to secondary school or beyond.

The Children's Hospital School have a range of early interventions for schools including in-school support, training for staff and short-term placements for children at our Magpie Learning Centre which is our base for Key Stage 2 & 3 students who need support in the community.



## **The offer**

- Three days per week (Mon, Wed & Fri) 9.40am – 2.30pm, with pupils attending their home school alongside the placement to support their sense of belonging
- Pupils are offered a placement for 6-8 weeks
- Maximum of 8 pupils per class
- Academic curriculum focusing on English, maths, science, computing and PSHE
- Therapeutic curriculum including creative and outdoor learning to improve mental wellbeing by bringing fun, relaxation and distractions from the stresses endured by their everyday lives

## **Who will benefit?**

Pupils who are beginning to struggle to attend school. This might include pupils who are reluctant to separate from parents and who are over-reliant on adults in school. We aim to help them develop resilience and independence, which can help to re-establish better attendance at school.

## **What are the criteria?**

A typical learner at the Magpie Learning Centre will be someone who

- is affected by anxiety in school
- may try to withdraw from activities
- will already be receiving support in school from support staff or from the SEMH team
- benefits from being in nurturing spaces in school
- benefits from a small and quieter setting to express what they are experiencing in school

Due to the mixed and complex needs of the children at our school, referrals for pupils who present challenging behaviour or who are at risk of exclusion should be made to agencies other than The Children's Hospital School.

## **Aims**

To provide learning opportunities in which pupils can develop:

- social skills
- self-control
- self-awareness
- self-worth
- resilience
- independence
- ambition



## Example timetable

Time	Activity
9:40 – 10.10	Students arrive – breakfast & engagement activities
10:10 – 11:00	English
11:00 – 11:20	Break
11:20 – 12.10	Maths
12:10 – 12:40	PE / active learning / group therapeutic activity
12:40 – 1.20	Lunch & enrichment activities
1:20 – 2.10	Science / Computing / Art
2:10 – 2:30	PSHE / personal development

### Will I be able to visit the pupil while at the Magpie Learning Centre?

Yes, you are invited to visit to see how your pupil manages their learning in our setting so that you can help them to remain successful in your school on their return. This is most useful towards the end of the placement when a review meeting will be arranged.

### How will pupils get there?

Where possible, we suggest that parents bring the pupils to the Magpie Learning Centre. We have a later start time to help it will fit round the school run. If parents are unable to provide transport, then schools will need to make sure that transport arrangements are in place.

### Will food be provided?

Breakfast and snacks at break will be available free of charge to pupils. For lunch, pupils will need to bring a packed lunch from home. Children who are entitled to FSM will be provided with a meal. Fruit and water will be freely available throughout the school day.

### What kind of assessments will happen at the Magpie Learning Centre?

In order to support the pupils to manage being in our setting we will do academic and well-being screening, so we can identify their obstacles to thriving in school. We will report back to you on our findings, along with recommendations at the end of the placement.



## How do schools make a referral?

Schools applying for a short-term intervention placement should complete a referral form which can be downloaded from our website and should be emailed to [referrals@childrenshospitalschool.leicester.sch.uk](mailto:referrals@childrenshospitalschool.leicester.sch.uk)

## Are all referrals accepted?

No, we will accept referrals for the pupils that we think will most benefit from our early intervention programme and will meet our criteria.

## What is the cost for a KS3 intervention placement?

The cost for a placement is £105 per day which is in line with other alternative provisions. This covers all academic and therapeutic support, and food on all days. Schools are responsible for arranging transport to and from the centre.



## What other training & support is available?

We support schools and other partners through a regular CPD programme and a bespoke training offer which can be delivered in your setting to small groups or whole staff teams. Our current offer includes the following and can also be found on our website by clicking [HERE](#):

- Youth Mental Health First Aid qualifications (MHFA accredited)
- Regular CPD twilight programme of events at our school or online
- Bespoke 'in-house' training for your school or provision
- SLE and LLE deployment in schools for example, to develop resources / policies for supporting children with medical needs and school audits to evaluate provision and offer advice



# Partnership agreement

To ensure the success of an early intervention placement it is important that both schools work in partnership alongside the pupil, parents, and other professionals. Once a referral has been accepted, both parties will agree a service level agreement to establish and clarify the operational and financial arrangements between them.



## Our Commitment

- Make a personalised educational programme in a safe environment
- To undertake appropriate educational assessments to ensure the correct personalised learning programmes are provided and to support the return to school
- To monitor and evaluate the effectiveness of provision for individual pupils who are on an integration programme. Support the home school in the development of an appropriate and sustainable integration programme
- Contribute to Education, Health and Care Plan assessments according to the Code of Practice, where required
- Support and advise schools in maximising the achievements and attainment of pupils with medical needs
- Work closely with parents, external agencies and home schools
- To ensure accurate sharing of information, providing progress, attendance and safeguarding updates to home schools and external agencies that are involved with the pupil.
- Work with schools to support a successful transition back into school

## Home School's Commitment

- Maintain pupils on their school roll
- Ensure there is a named contact person (usually the SENCo) for pupils with medical needs
- Work with staff at The Children's Hospital School to plan and implement individual learning plans for pupils with medical needs which have special or additional educational needs
- Implement the school's policy on Inclusion, Equalities and Special Educational needs, taking into account the code of practice, DfE statutory guidance and any LA policies
- Maintain collaborative and positive working relationships with The Children's Hospital School, parents/carers and outside agencies
- To attend any multi agency review meetings organised by The Children's Hospital School
- Work with The Children's Hospital to plan and implement any individual healthcare and reintegration plans
- To support the implementation and success of reintegration plans for pupils