



Autumn Term 2 2021 newsletter

Welcome to The Children's Hospital School newsletter. We hope you enjoy reading about all the latest news across all our settings, Willow Bank School, Leicester Royal Infirmary and The Beacon Unit.

Dear Parents/Carers

I can't quite believe we are at the end of another year already. There seems to have been so many things packed into this term and time has flown by. I am encouraged that school life has been able to carry on as close to normal as possible over the last term during uncertain times for everyone.

One of the best things I get to do is visit the 3 different parts of our school and witness the brilliant teaching going on. It is a real joy to see children enjoying school and being taught so well by the staff, from printing at the Beacon to French at Willow Bank or science at the Leicester Royal Infirmary.

There have been a few changes across the school this term as we aim to improve the facilities by investing in classroom space, technology and teaching resources. Staff are getting very handy at using technology to teach pupils in school or remotely at home, including our new virtual reality headsets.

In November, we had our annual 'Challenge Partners' quality assurance review which was carried out by 4 external reviewers who spent 2 days observing lessons and meeting pupils, staff and governors. The full report is available on our website but a couple of quotes to share:

"Staff know students well and show exceptional commitment to improving their lives. Trusting relationships are a key strength of the school."

"Almost all the students engage with the school, attend and make excellent holistic progress and turn their lives around."

I am sure all parents, carers and pupils will join me in saying a huge thank you to the staff across the school. They have worked so hard to ensure learning continues and normality is preserved as much as possible. I have been incredibly proud to see staff and pupils getting on with school in such difficult circumstances.

Thank you all so much for your support this year and I hope everyone has a wonderful break. If there is anything you need, or we can help in any way then please get in contact. Make sure you get plenty of rest and I look forward to seeing you all in 2022.

Best wishes,

Stephen Deadman



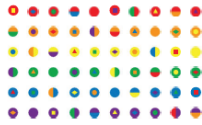
GRANTS, DONATIONS & CHARITY EVENTS

AKT – THE BEACON ENTERPRISE EVENT

The Beacon held an enterprise event and **£100** was raised, this money was donated to akt.

akt supports lgbtq+ young people aged 16-25 in the uk who are facing or experiencing homelessness or living in a hostile environment.

akt support young people into safe homes and employment, education or training, in a welcoming and open environment that celebrates lgbtq+ identities.



thank you

The Children's Hospital School, The Beacon

this is to recognise your
wonderful fundraising in support of
lgbtq+ young people



safe homes and better futures
for lgbtq+ young people
akt.org.uk

aktcharity



NMBS DONATION

Willow Bank School has received a donation of **£6,000** from NMBS Ltd.

This donation will be used in respect of Willow Bank School Council funding and music room redevelopment and new music equipment.



Children's Hospital School

BOOKS2AFRICA

Books2Africa is a UK registered charity that is improving the quality of education in Africa through the provision of books, computers and educational resources that enable individuals and communities to acquire knowledge and achieve their full potential in a globalized world.

The charity collects and ships donated educational resources from individuals and organisations in the UK, reducing waste and increasing 'readcycling'.



CERTIFICATE OF THANKS



Awarded to
The Children's Hospital School
For donating and funding
a shipment of
**7 box(es) of books and
resources to Africa**

2021-11-26 12:08:41

www.books2africa.org | UK Charity Number 1152599

CHILDREN IN NEED

On Friday 19th November Willow Bank School raised **£116** for Children in Need.

This money was raised through staff donating £2 to wear non-uniform or something yellow or spotty.

The School Council also organised activities over break and P3 including face painting and temporary tattoos.



TESCO COMMUNITY GRANTS SCHEME

The Children's Hospital School has submitted a successful application for the customer vote in Tesco stores. Voting will commence in store from the first week of January 2022 until 31st March 2022.

Stores which will vote on our project are:
Narborough Express, Leicester Forest East Express, Aberdale Rd Express, South Wigston, Rowley Fields Express, Leicester Saffron Express, Leicester Evington, Leicester Lutterworth Express, Countesthorpe Express

ODD SOCKS DAY

Students at The Beacon joined in with Anti-Bullying Week by wearing odd socks and celebrating uniqueness! Students also studied a variety of leaflets in their English lessons and created an Anti-Bullying leaflet as part of their GCSE preparations!



ARTIST IN RESIDENCE

Students have continued to enjoy visits from our Artist in Residence, courtesy of Attenborough Arts, enjoying a range of activities including using air-drying clay to make models!



BEACON 'BIG SHOUT OUTS'



This term's 'Big Shout Outs' were awarded for:

An amazing formal letter!
Excellent work in maths!
Fabulous engagement in PSHE!

WORK EXPERIENCE

Work Experience was a great success (Monday 4th October to Friday 8th October). All those on placements in year 11 worked extremely hard over the week and the feedback from employers was very positive. This was a fantastic opportunity for the students to apply their skills within a working environment, to get an insight into a career they may wish to pursue in the future and to build on their confidence. We are extremely proud of the students involved. They were a credit to the school. Well done!

A few examples of the wonderful feedback we received from the employers:

"It was a pleasure to have [student] with us. She engaged well with our children. She was always helpful and willing to do whatever she was asked to do." (University of Leicester Nursery)

"I am so pleased with how [student] has fitted in so well into salon life. [student] has been so professional answering the telephone and looking after customers." (Snippers Hair and Solarium)

"[Student] has been a pleasure to have here at the Dog House. The dogs love her too!" (The Dog House Gilmorton)

"[Student] was very helpful, polite and sensible. She always asked if there were any other tasks that needed doing." (Borraj's Medivet)

"[Student] has been a happy addition to the team." (Pork Pie Library and Community Centre)



Anstey Alpacas

The Dog House Gilmorton



ALAN GODRICH SEWING MACHINE SPECIALISTS



This term we have been very lucky and wanted to pass on our thanks to George and his team at Alan Godrich sewing machine specialists in Leicester.

They kindly serviced, for free, two of our unused sewing machines. This has allowed Willow Bank students the opportunity to learn new skills and enjoy making items for themselves and others. We are so grateful and have been putting the machines to use in crafting projects across the school!

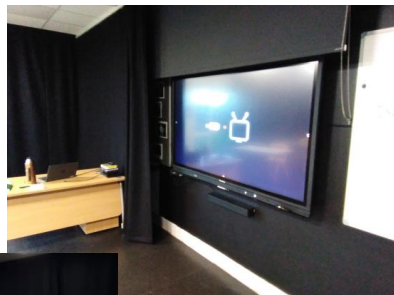
FILM / DRAMA ROOM MAKEOVER

The film/drama room has had a makeover. New floor, screen and sound system all in place, plus blackout curtains, staging blocks and lighting. Top facilities for one of our most popular and successful subjects.

From this



To this



POST 16 EVENT

A huge thank you to the below organisations for coming along to support our Post 16 event at Willow Bank School.



LEICESTER HALF MARATHON



Huge congratulations to our colleague Kathryn Smith who successfully completed the Leicester Half Marathon in the most atrocious weather conditions.

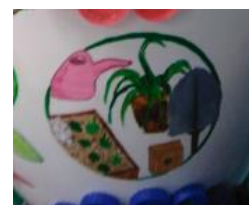
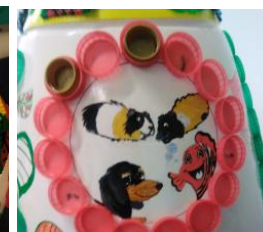
REMEMBRANCE DAY

The cake below was made by one of our brilliant teaching assistants for Remembrance Day, amazing work!!



CHS ROCKET UPDATE

The CHS Rocket is now back at Willow Bank School so we thought we give you a closer look at all the detail involved.



CHRISTMAS WREATH MAKING

Students and teachers have been busy making Christmas wreaths this week to sell at our Christmas craft stall.



LEARNING THROUGH LANDSCAPES

Students have been preparing our school raised beds, planting out young leeks, brussel sprouts and lettuce. We just managed to get some onion and garlic sets in this week too, so they can grow big and strong in the spring!!!

We have also spread 20 huge bags of compost (thank you to Graham from 'Learning through Landscapes' for supplying these) and started planting our wonderful plants and bushes also donated by LtL. We hope next year to attract all those lovely pollinators into our school grounds!!!

Working with Graham from Learning through Landscapes. KS3 have created our very own wild flower area and some solitary bee homes..... watch this space!



CHRISTMAS POP UP SHOP

Well done to KS3 and Year 10 students for setting up a wonderful and very successful Christmas 'pop up' shop. Students have spent all term creating items by recycling, up-cycling and reusing objects. Examples of the some of the things we have made included scrunchies, decorated pots, bags and gorgeous wreaths. Things flew off the shelves! So far money we have raised is standing at a total of £150! Amazing. We will be donating this money to a charity of the students' choosing.

The pop up shop will be back later next year.. we will keep you posted!



Also in the Christmas spirit



ACHIEVEMENTS

CHALLENGE PARTNERS

We are proud to be able to share our Challenge Partners QA review report. Judged as 'leading' in all areas. However, we don't stand still – always plenty to do!



Name of School:	The Children's Hospital School Leicester
Headteacher:	Stephen Deadman
Hub:	Ash Field
School phase:	Foundation Special
MAT:	Not applicable

Overall Peer Evaluation Estimate at this QA Review:	Leading
Date of this Review:	10/11/2021
Overall Estimate at last QA Review:	Leading
Date of last QA Review:	16/11/2020
Grade at last Ofsted inspection:	Outstanding

THE DUKE OF EDINBURGH AWARD

Willow Bank School has received DofE certification as a licensed centre. This is an important part of our ever-evolving curriculum offer.



NATIONAL AWARDS FINALISTS



Children's Hospital School

TRIPS

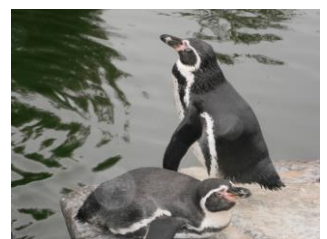
WARWICK CASTLE

Students from Willow Bank School visited Warwick Castle in September. The day was all about promoting positive relationships and feelings of health and happiness. It was an opportunity for the students to relax before embarking upon the new academic year. During the day students spent some of their time with staff but also had the option of exploring Warwick Castle in unsupervised groups.



ILAM HALL

This trip took place in October. Students from Willow Bank School went on a residential visit to Ilam Hall in Derbyshire. The visit was organised by the 'Youth Hostel Association' – an organisation that specialises in offering students the opportunity to develop their confidence and self-esteem. Students took part in a variety of activities focusing on teamwork and confidence building. These included outdoor activities such as archery and fire building. Students also visited the Peak Wildlife Park.



UPCOMING TRIPS

ICE SKATING

Students at Willow Bank School are being given the opportunity to take part in a trip to the ice rink at Jubilee Square on Thursday 16th December.

We thought this would be a festive way of rewarding students for all their hard work over the past term.

There are also other Christmas activities going on in the city centre including:

Wheel of Light

Clock Tower Christmas Tree

Nativity Scene at Town Hall Square



LONDON

There is a residential trip to London taking place in February 2022. We will be staying at a Youth Hostel Association accommodation.

This residential includes visits to the following landmarks:

Tower of London

Covent Garden

Westminster Abbey

Downing Street

Buckingham Palace

Natural History Museum



ANIMAL ADVENTURES

FUDGE & CO

See pictures below from the Animal Encounters Experience visit, Fudge & Co, to Willow Bank School in November.



HORSES FOR CAUSES

Horses for Causes have been visiting Willow Bank School every Monday since October.



FREE SCHOOL MEALS

Your children may be eligible for free school meals if you receive:

- > income support
- > income-based jobseekers allowance
- > income-related employment and support allowance
- > national asylum seeker support
- > child tax credit (providing you're not also entitled to working tax credit and have an annual gross income of no more than £16,190)
- > the guaranteed element of state pension credit
- > working tax credit run-on – paid for four weeks after you stop qualifying for working tax credit

Applying could also help your school get extra funding through the Government's Pupil Premium scheme.

Visit: <https://freeschoolmeals.leicester.gov.uk>
[Free School Meals | Leicestershire County Council](#)

TERM DATES

Autumn Term 2021

Christmas holidays: 20th Dec 2021 to 3rd Jan 2022

Spring Term 2022

Bank Holiday: Monday 3rd Jan 2022

Start of term for pupils: Tuesday 4th Jan 2022

Half term holiday: 14th Feb 2022 to 18th Feb 2022

Easter holidays: 11th Apr 2022 to 22nd Apr 2022

Summer Term 2022

Start of term for pupils: Monday 25th Apr 2022

Bank holiday: Monday 2nd May 2022

Half term holiday: 30th May 2022 to 3rd June 2022

Last day of summer term: Friday 8th July 2022



and finally

We wish you a merry Christmas and a happy new year



Children's Hospital School