



Children's Hospital School

'Better Together'

Headteacher: Mr S Deadman
Willow Bank School
Simmins Crescent
Leicester
LE2 9AH

Tel: 0116 229 8137

Summer Term 2 Newsletter

Welcome to the Children's Hospital School newsletter. We hope you enjoy reading about all the latest news across all our settings, Willow Bank School, Leicester Royal Infirmary and The Beacon Unit.

Dear Parents / Carers,

As we reach the end of the school year I want to pay tribute to everyone in our school community who have worked together through such challenging circumstances. The last 18 months have been very difficult as the country adapted to an ever-changing situation. Despite everything, it has been uplifting to see how much progress our young people have made with the support of staff, families and the wider community.

Our Year 11 students had a wonderful send off last week and we look forward to seeing them in August when they receive their exam results. Their hard work and dedication to achieve the very best they can will allow them to move on successfully into post-16 studies or employment.

We are saying goodbye to a few staff at the end of term – Michelle Poynton (Willow Bank admin), Margherita Stevens (LRI admin), Mandy Prickett (premises team) and Gabrielle Smith (teaching assistant). I would like to say a big thank you to all of them for their work over the past few years and wish them all the best in the future.

In addition, I would also like to say thanks to our team of art therapists who have worked at the school this year – Emma, Vladimir, Yvonne and Lauren.

This year we have seen the new Beacon CAMHS unit open after many years of planning. Next year we hope to see some expansion of the Willow Bank provision and a start to the Children's Hospital redevelopment at the Leicester Royal Infirmary. We are proud of the difference we make to children and want to ensure our provision can match need.

I am sure there will be bumps in the road ahead, but we have shown that working together is the best way to ensure everyone is supported to achieve.

I do hope you all have a wonderful break over the summer and manage to get a well-earned rest. I look forward to working alongside you all again next year.

Best wishes

Stephen Deadman



GRANTS AND DONATIONS



£1,000 JOHN LEWIS DONATION

John Lewis & Partners Leicester, Give A Little Love campaign have selected local charitable groups that make a difference to young people lives, helping to end child poverty and supporting children from all backgrounds.

The Children's Hospital School have been selected to be one of 3 charities for this quarter and are due to receive a donation of **£1,000**.

MERLINS MAGIC WAND £200 DONATION



Merlin's Magic Wand is a children's charity that supports children facing challenges of serious illness, disability or adversity around the world.

The Charity provide complimentary tickets and fund a contribution towards a travel grant for families to enjoy their day at a Merlin Entertainments' attraction.

The Children's Hospital School have received a **£200** donation towards the Warwick Castle trip.

NHS BIG TEA AT WILLOW BANK SCHOOL

Willow Bank School held a cake sale/tea to raise money for the NHS on Friday 2nd July.

£63.00 was raised. I think we can all agree that the NHS deserves our thanks and recognition.



LEARNING SUITE GARDEN

This year is the first year the Learning Suite has had its own little area outside.

We have a lovely seating area, and our own little garden. We have been busy planting shrubs in the garden to help with pollinating and planting flowers and vegetables in various planters. For our bird table we made fat balls and we all make sure that there is food and water for the birds. This year we were lucky that a family of blue tits made their nest in our bird house and we all enjoyed listening to the new chicks when they hatched.

The students also used their craft skills to make their own markers for the vegetables they are growing and here are some of the first crop, although some unique in shape and size, our cook Nicky has used them in our school meals and they were very tasty.



Children's Hospital School

CHROMATOGRAPHY AT THE BEACON



Students enjoyed practical science on the ward, with chromatography: separating the different colours that make up inks.

AQA AWARDS SUCCESS

Students at The Beacon have completed 44 AQA Unit Awards this academic year, ranging from Music Technology to Child Care, and anything else in between!

ARTIST IN RESIDENCE FOR THE MONTH OF JUNE!

During June, Sian Watson Taylor, Artist in Residence, organised by the Attenborough Arts Centre, has been visiting The Beacon School. Students have enjoyed using mixed media to create their own baubles and bottles.



MAKING PAPER

Much mess and hilarity ensued as the students, and staff, enjoyed making their own paper, another activity linked to the Artist in Residence.



PUFFER FISH ART EXPLOSION

Students have enjoyed creating their own Puffer Fish using a spiky ball and paints.



SUMMER SCHOOL AT THE BEACON

The Beacon will be hosting a Summer School for patients this July and August, to include various art and music activities lead by Soft Touch Arts. King Brass will also be hosting their event in the garden, much like we enjoyed in the Spring! T-Shirt making, graffiti art and print making will also be available throughout the summer.



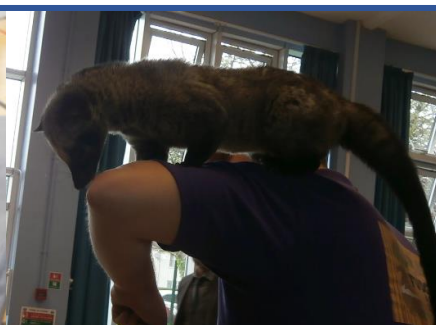
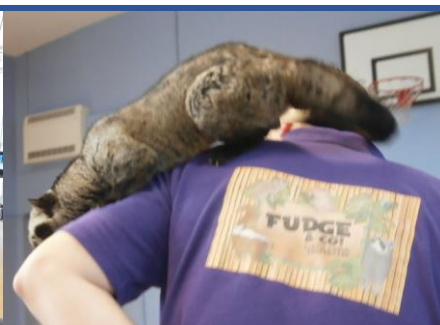
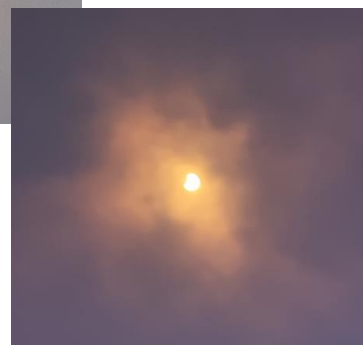
EURO 2020 AT WILLOW BANK SCHOOL

Staff at Willow Bank School decided to decorate the hub to celebrate the Euro 2020 tournament.



ECLIPSE

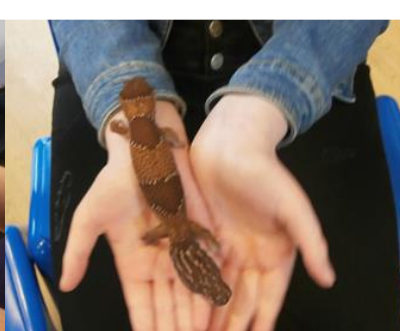
Mrs Whitehead managed to capture some pictures of the eclipse that we wanted to share with you.



FUDGE & CO VISIT TO WILLOW BANK SCHOOL

Fudge & Co visited Willow Bank School on 26th May with a wide array of animals.

Lots of fun was had by all and some interesting animals came to visit.



Children's Hospital School

WILLOW BANK SCHOOL LEAVERS CELEBRATIONS

CELEBRATION AFTERNOON

On Monday 14th June, Willow Bank held a celebration afternoon for year 11 students.

It was a really brilliant afternoon with karaoke, a photo booth, the 'Willow Bank Oscars', an amazing buffet (thanks to Nicky) and some pretty impressive outfits from students and staff.

The afternoon was a fitting celebration at the end of weeks of assessments.

Thank you to everyone involved.

Claire Mooney

Assistant Lead of Willow Bank School



LEAVERS ASSEMBLY

Friday 25th June was the Year 11 Leavers' Assembly at Willow Bank.

Although we were not able to hold the event in our usual way, a great day was still enjoyed by all.

We are extremely grateful to East Midlands Marquees Ltd, who provided us with a marquee at the last minute so that we could invite parents to join us in celebrating the achievements of our leavers without having to worry about the weather.

After the formalities and awards of the Leavers' Assembly were completed, it was time for the students (and staff) to have some fun! The school was littered with inflatables ranging from a huge inflatable slide and a bungee run to an imposing Rodeo bull and some rather heavy Sumo suits! It's difficult to say who is more competitive – staff or students.

With all of that exertion, there was a real need for fuelling up and this took the form of popcorn, candy floss, cupcakes, slushies and a barbecue – expertly manned by Oli Jeffcote and James Stafford (luckily Nicky had worked her magic and made sure that no one paid the price for an undercooked sausage!).

The day ended with the distribution, and signing, of the Yearbook. Thank you to Charlie for all her efforts and thanks to Mr Gibson for a very apt front cover.

Come three o'clock, it was time to bid farewell to a wonderful group of students and to wish them every success for their futures. WELL DONE YEAR 11!

Claire Mooney

Assistant Lead of Willow Bank School

ROCKET AROUND LEICESTER LOROS UPDATE

Rocket Around Leicester is a fundraising event raising money for LOROS, which will take place in and around Leicester city from July to September.

LOROS have teamed up with the National Space Centre and 'Art in the Wild' to create a fleet of huge uniquely designed fibreglass rockets to be displayed around the city throughout the summer. Our rocket is now complete.



Children's Hospital School

SUMMER CONTACTS SHOULD YOU NEED ASSISTANCE

Jayne Lister - Family Support Worker
Summer holidays (Mondays only)
jayne.lister@leicester.gov.uk
07525 313277

Early Help and Social Care
Leicester City Council - 0116 454 1004

or
safeguarding@childrenshospitalschool.leicester.sch.uk

Leicestershire County Council - 0116 305 0005

Rutland County Council - 01572 758407

James Stafford
Assistant Head Teacher
The Children's Hospital School

Choose health

Know what affects your child,
what makes them grumpy, hyper, disconnected...



- Do they need snacks throughout the day?
- Do they need lots of sleep?
- Do they need to get out and about and do exercise?
- Do they need time alone?

Trust that you know your child and give them the basics that they need to cope with difficult days

Be calm

Try to stay calm whilst your child is feeling distressed.
Your child may show:



- highs and lows
- blame
- melodrama
- self-centredness
- anger

Get learning

Be involved, find out more and talk about:

- social media
- internet benefits and dangers
- new music
- language and slang
- current affairs
- what it's like to be young in the current world



Work together

Share ideas about how to:



- create action plans
- have a problem-solving approach
- enjoy achievements
- be forward-looking
- show them that we can all get things wrong

Communicate

The small things you do make all the difference:

Keep talking, texting, listening, hearing, hugging, sympathising, smiling, reassuring, checking, sharing, suggesting, encouraging, respecting

Move on up

Encourage independence:

- help them to move positively from child identity towards teen identity
- increase their responsibilities
- be positive whenever they act maturely



Be aware of your child's changing needs. Sometimes it might feel like one step forwards, two steps back.

Be wise

As they discover new things, try to:



- be interested
- be non-judgemental
- guide
- give boundaries
- see it from all sides
- listen to their point of view
- choose your words carefully
- act on warning bells

Be the anchor

In times of change you are:

- constant
- family
- familiar
- routine
- in-jokers
- irritating
- comforting
- home



Have fun

Provide lots of light relief:

- be silly
- be embarrassing
- play games
- laugh together
- do stuff together
- make jokes
- make things
- be outside



Look after yourself

Support yourself, to best support your child:

- lean on friends
- offload on other family
- find 'me time'
- see the GP
- relax, exercise, sleep well, eat well
- remember tomorrow is a new day



Ten Ways for parents to help children cope with change

ASDA foundation
Transforming Communities. Improving Lives

Find
Your Feet
YOUNG MINDS
stepping up, moving up, growing up



Children's Hospital School

IZZY'S ADVENTURES

Willow Bank School have a new helper in the garden!!



FREE SCHOOL MEALS

Your children may be eligible for free school meals if you receive:

- > income support
- > income-based jobseekers allowance
- > income-related employment and support allowance
- > national asylum seeker support
- > child tax credit (providing you're not also entitled to working tax credit and have an annual gross income of no more than £16,190)
- > the guaranteed element of state pension credit
- > working tax credit run-on – paid for four weeks after you stop qualifying for working tax credit

Applying could also help your school get extra funding through the Government's Pupil Premium scheme.

Visit: <https://freeschoolmeals.leicester.gov.uk>

2021/2022 TERM DATES

AUTUMN TERM

Mon 23rd August Staff training day **(no pupils)**

Tue 24th August Term begins

Mon 30th August Bank Holiday

Mon 18th – Fri 22nd October half term holiday

Fri 26th November Staff training day **(no pupils)**

Fri 17th December last day of autumn term

20th December – 3rd January Christmas holiday

SPRING TERM

Tues 4th January Term begins

Mon 14th – Fri 18th February half term holiday

Fri 8th April last day of spring term

11th April – 22nd April Easter holiday

SUMMER TERM

Mon 25th April Term begins

Mon 2nd May Bank Holiday

Mon 30th May – Fri 3rd June half term holiday

Fri 8th July Last day of summer term

MEET THE STAFF



Anila Patel

PSHE Teacher

This is my 5th year working at the Children's Hospital School. For the first three years I worked at the LRI base. I now work in Willow Bank and teach PSHE. I am passionate about promoting mental health wellbeing and incorporate that into my lessons.

I am an animal lover and can often be found talking about my two mini lop rabbits!

LAST DAY OF TERM REMINDER

Willow Bank School closes to students at **12.30pm** on **Friday 9th July 2021**.



Children's Hospital School